

Ventilatori tangenziali

Ø 60 x 120...420

Cross-flow blowers
Ø 60 mm x 120 .. 420 mm

Ventilateurs tangentiels
Ø 60 mm x 120 .. 420 mm

Querstromgebläse
Ø 60 mm x 120 .. 420 mm



Ventilatori Tangenziali

Cross-flow blowers

Ventilateurs tangentiels

Querstromgebläse

MOTORE :

2 poli a poli schermati

CARCASSA :

Coperchi in plastica;
Coclea in lamiera zincata

VENTOLA :

in alluminio

CONNESSIONE

n°2 Faston 6,3 x 0,8 mm

VOLTAGGI :

230V - 50/60Hz.
su richiesta :
115V- 50/60Hz.

PROTEZIONE : IP40

ISOLAMENTO : " F "

TEMPERATURA DI UTILIZZO :

da -20°C a + 40°C

FUNZIONALITA' : (S1)

Continua in tutte le posizioni

MARCATURA : CE

in accordo a EN 60335.1
Bassa Tensione 73/23 EEC,
Direttiva Macchine 89/392/EEC,
EMC 89/336/EEC
RoHS 95/2002/CE

MOTOR :

2 pole shaded pole

HOUSING :

Thermoplastic resin body;
galvanized steel housings

IMPELLER :

aluminium

MAINS CONNECTION

n°2 terminals 6,3 x 0,8 mm

VOLTAGE RANGE :

230V - 50/60Hz.
on request
115V- 50/60Hz.

PROTECTION : IP40

INSULATION : " F "

OPERATING TEMPERATURE :

-20°C to + 40°C

OPERATION : (S1)

Continuous in all positions

MARKED : CE

according to EN 60335.1
73/23 EEC low voltage
89/392/EEC machine directive
EMC 89/336/EEC
RoHS 95/2002/CE

MOTEUR :

2 pôles " shaded pole "

CARCASSE :

Couvercles en thermoplastique;
volutes en acier galvanisé.

TURBINE :

aluminium

CONNECTION :

n°2 cosses 6,3 x 0,8 mm

VOLTAGE :

230V - 50/60Hz.
sur demande
115V- 50/60Hz.

PROTECTION : IP40

ISOLATION : " F "

TEMPERATURE D'EXERCICE

de -20°C à + 40°C

TRAVAIL : (S1)

Continu en toute position

MARQUAGE : CE

en accord avec EN 60335.1
73/23 EEC basse tension
89/392/EEC directive machines
EMC 89/336/EEC
RoHS 95/2002/CE

MOTOR :

2 polige Spaltpolmotoren

VENTILATORGEHAUSE :

Harzthermoplaststoff;
Gehäuse aus sendzimiervverzinktem
Stahlblech

RADIALLÜFTERRÄD :

Aluminium

NETZANSCHLUß :

Flachstecker 6,3 x 0,8 mm

SPANNUNG :

230V - 50/60Hz.
auf Anfrage
115V- 50/60Hz.

SCHUTZART: IP40

ISOLATIONSKLASSE: " F "

TEMPERATUR BEREICH :

- 20°C bis + 40°C

BETRIEBSART : (S1)

Fortdauernd in den allen Lagen

ZULASSUNGEN : CE

Abkommen mit EN 60335.1
73/23 EEC
89/392/EEC
EMC 89/336/EEC
RoHS 95/2002/CE

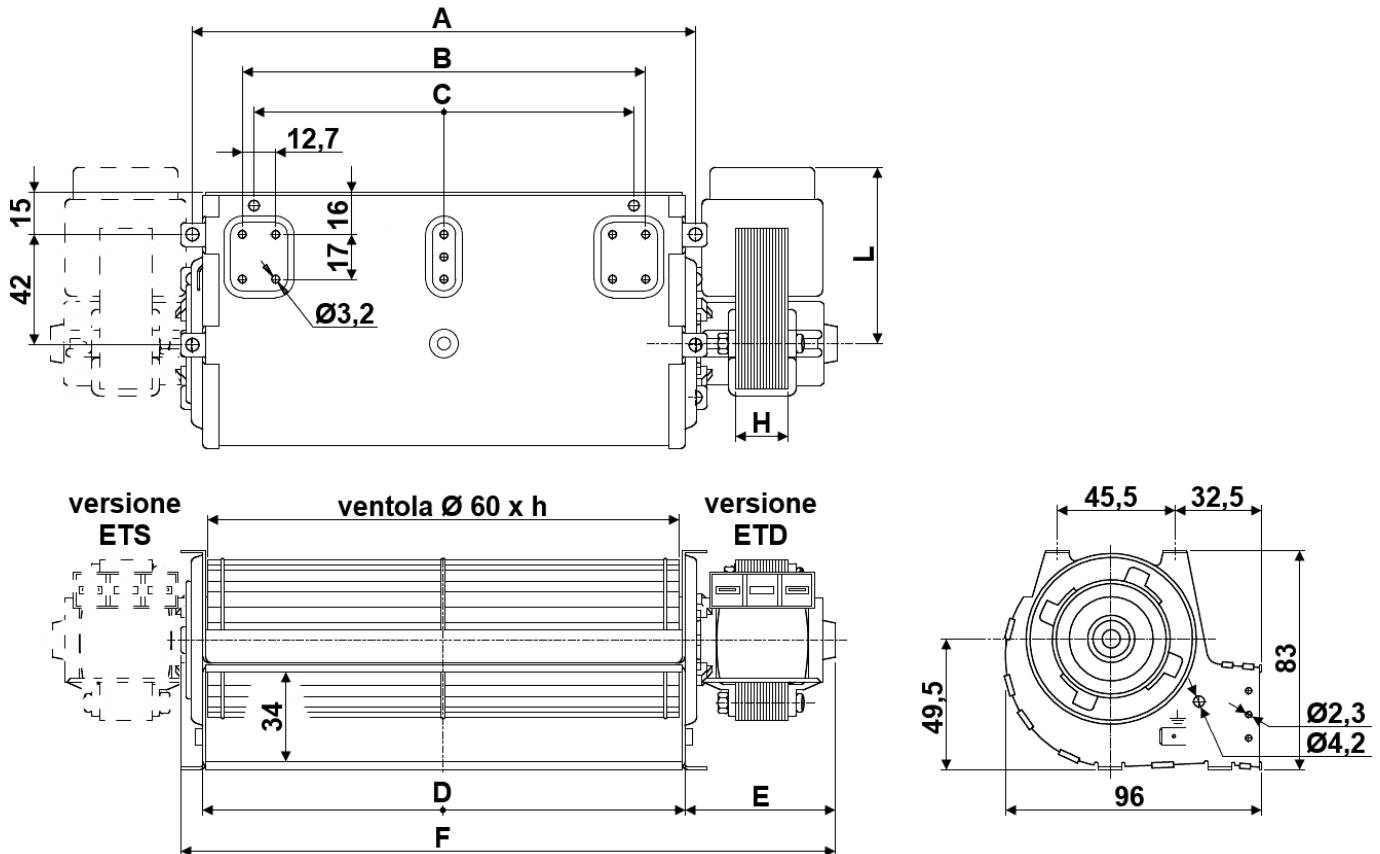
Ventilatori tangenziali semplici


Cross-flow blowers
single inlet

Ventilateurs tangentiels
simple turbine

Einfach
Querstromgebläse

Serie ETD - ETS



Serie ETD / ETS ... : 230V - 50/60Hz - marcati  cl. B, in accordo a EN.60335.1

CODE	Electric data			Dimensions							Impeller ø x h	Airflow max, m ³ /h	Pressure max, Pa
	A.	W _{in.}	RPM	A	B	C	D	E	F	H			
ETD(S)60120F15	0,18	22	1650	133	94	85	124	61	185	15	60 x 120	75	45
* ETD(S)60120F20	0,19	24	2250	133	94	85	124	66	190	20	60 x 120	85	50
ETD(S)60180F20	0,20	25	1650	193	154	145	184	66	250	20	60 x 180	140	58
* ETD(S)60180F30	0,29	41	2100	193	154	145	184	76	260	30	60 x 180	175	68
ETD(S)60240F30	0,30	42	1850	253	214	205	244	76	320	30	60 x 240	185	63
* ETD(S)60240F40	0,33	43	2200	253	214	205	244	86	330	40	60 x 240	235	70
ETD(S)60300F30	0,34	44	1500	313	274	265	304	76	380	30	60 x 300	220	60
* ETD(S)60300F40	0,34	45	1650	313	274	265	304	86	390	40	60 x 300	240	65
ETD(S)60420F40	0,35	46	1130	433	394	385	424	86	510	40	60 x 420	280	60

* disponibili a magazzino salvo venduto

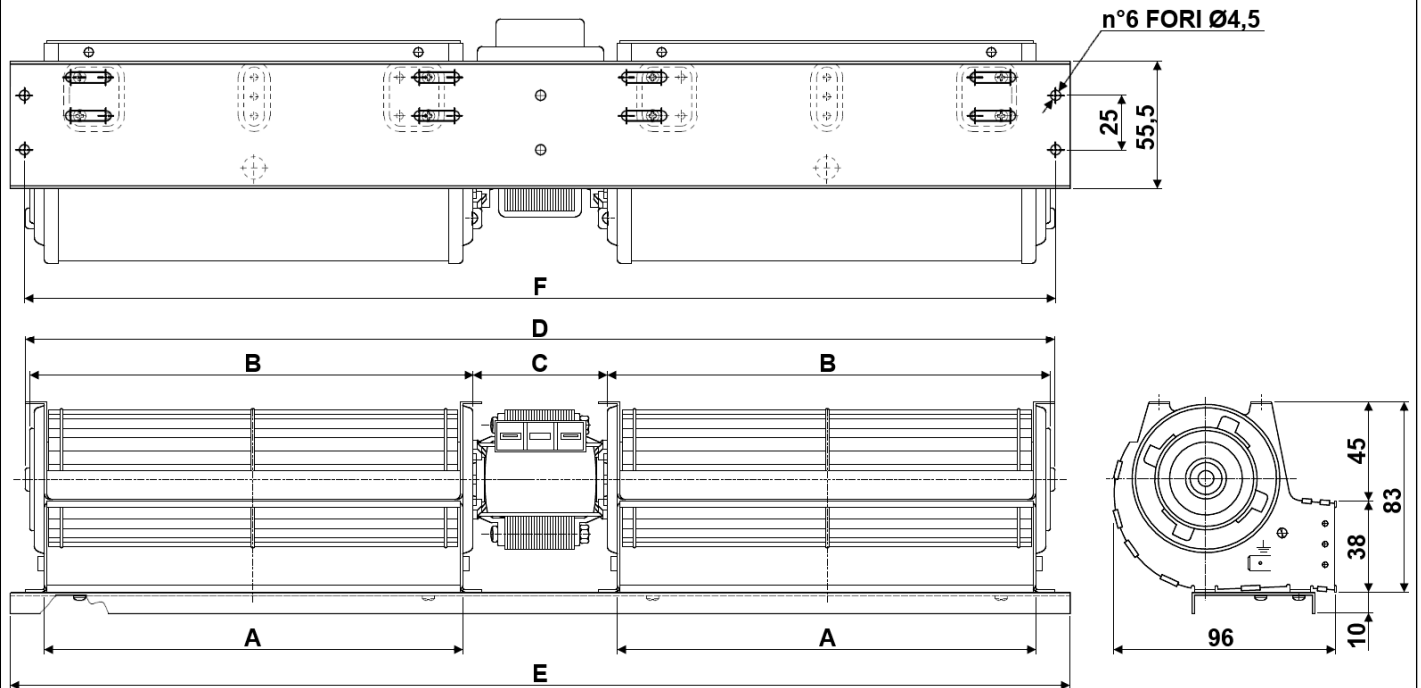
Ventilatori tangenziali doppi

Cross-flow blowers
double inlet

Ventilateurs tangentiels
double turbine

Doppel
Querstromgebläse

Serie ETC



Serie ETC ... : 230V - 50/60Hz - marcati  cl. B, in accordo a EN.60335.1

CODE	Electric data			Dimensions						Impeller ø x h	Airflow max, m ³ /h	Pressure max, Pa
	A.	W _{in}	RPM	A	B	C	D	E	F			
ETC60120F20	0,19	26	1400	124	133	50	324	347	337	60 x 120	140	45
* ETC60120F30	0,32	42	2300	124	133	60	334	347	337	60 x 120	260	55
ETC60180F30	0,33	43	1340	184	193	60	454	468	455	60 x 180	255	58
* ETC60180F40	0,34	44	1560	184	193	70	464			60 x 180	295	58
ETC60240F30	0,33	43	1160	244	253	60	574	585	575	60 x 240	300	55
* ETC60240F40	0,35	45	1240	244	253	70	584			60 x 240	320	60
ETC60300F30	0,33	43	1050	304	313	60	694	705	696	60 x 300	415	58
* ETC60300F40	0,35	45	1030	304	313	70	704	715	706	60 x 300	410	60

* disponibili a magazzino salvo venduto

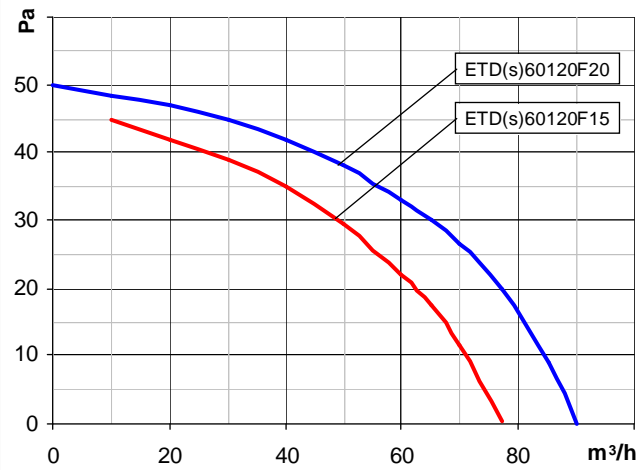
Curve di portata

Performance curves

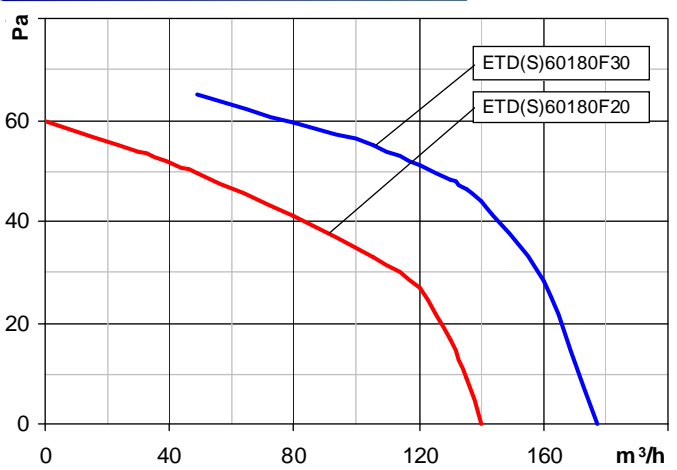
Courbes de débit

Luftleistungskennlinien

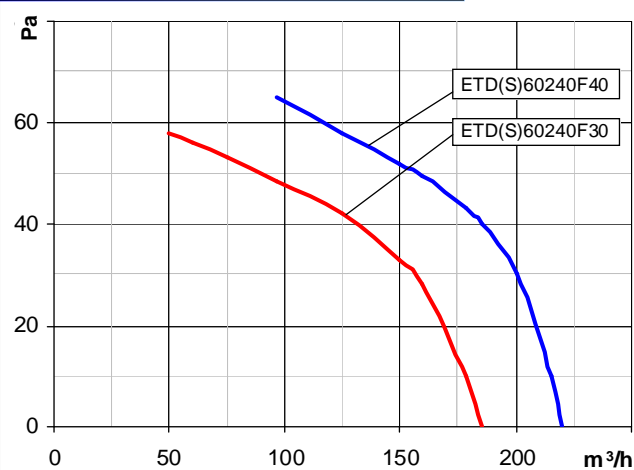
ETD.60120.15 - 60120.20, 50Hz



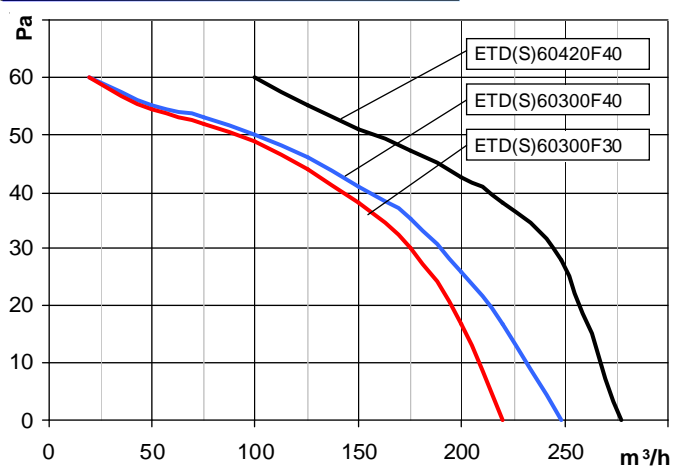
ETD.60180.20 - 60180.30, 50Hz



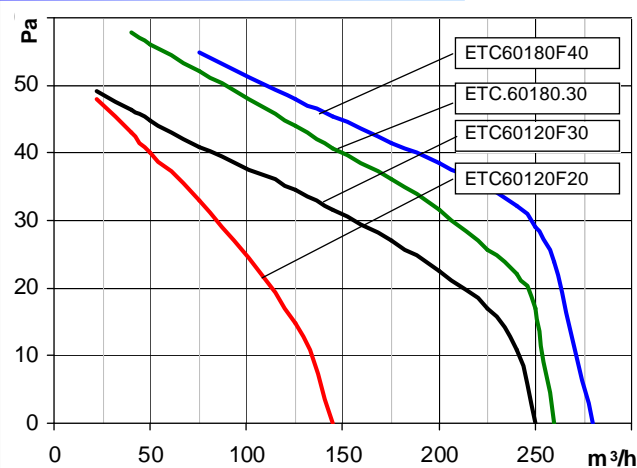
ETD.60240.30 - 60240.40, 50Hz



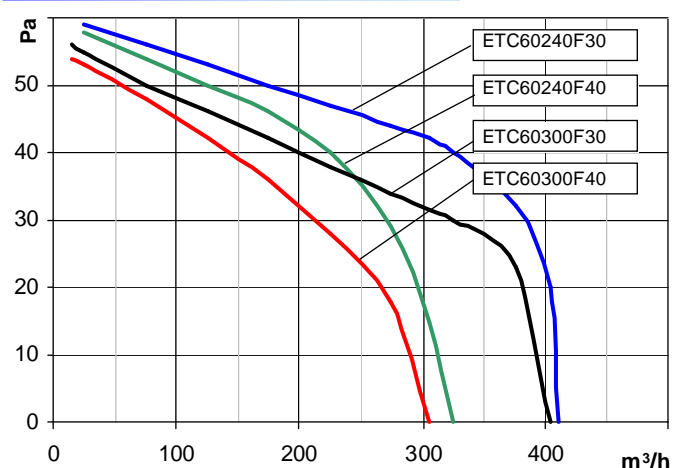
ETD.60300.30 - 60420.40, 50Hz



ETC.60120.20 - 60180.40, 50Hz



ETC.60240.30 - 60300.30, 50Hz



Tutti i dati di questo catalogo sono indicativi e possono essere variati senza preavviso. All data are indicative and may change without notice.

