

# Ventilatori tangenziali

## Ø 60 x 120...420

**Cross-flow blowers**  
Ø 60 mm x 120 .. 420 mm

**Ventilateurs tangentiels**  
Ø 60 mm x 120 .. 420 mm

**Querstromgebläse**  
Ø 60 mm x 120 .. 420 mm



### Ventilatori Tangenziali

### Cross-flow blowers

### Ventilateurs tangentiels

### Querstromgebläse

#### MOTORE :

2 poli a poli schermati

#### CARCASSA :

Coperchi in plastica;  
Coclea in lamiera zincata

#### VENTOLA :

in alluminio

#### CONNESSIONE

n°2 Faston 6,3 x 0,8 mm

#### VOLTAGGI :

230V - 50/60Hz.  
su richiesta :  
115V- 50/60Hz.

#### PROTEZIONE : IP40

#### ISOLAMENTO : " F "

#### TEMPERATURA DI UTILIZZO :

da -20°C a + 40°C

#### FUNZIONALITA' : ( S1 )

Continua in tutte le posizioni

#### MARCATURA : CE

in accordo a EN 60335.1  
Bassa Tensione 73/23 EEC,  
Direttiva Macchine 89/392/EEC,  
EMC 89/336/EEC  
RoHS 95/2002/CE

#### MOTOR :

2 pole shaded pole

#### HOUSING :

Thermoplastic resin body;  
galvanized steel housings

#### IMPELLER :

aluminium

#### MAINS CONNECTION

n°2 terminals 6,3 x 0,8 mm

#### VOLTAGE RANGE :

230V - 50/60Hz.  
on request  
115V- 50/60Hz.

#### PROTECTION : IP40

#### INSULATION : " F "

#### OPERATING TEMPERATURE :

-20°C to + 40°C

#### OPERATION : ( S1 )

Continuous in all positions

#### MARKED : CE

according to EN 60335.1  
73/23 EEC low voltage  
89/392/EEC machine directive  
EMC 89/336/EEC  
RoHS 95/2002/CE

#### MOTEUR :

2 pôles " shaded pole "

#### CARCASSE :

Couvercles en thermoplastique;  
volutes en acier galvanisé.

#### TURBINE :

aluminium

#### CONNECTION :

n°2 cosses 6,3 x 0,8 mm

#### VOLTAGE :

230V - 50/60Hz.  
sur demande  
115V- 50/60Hz.

#### PROTECTION : IP40

#### ISOLATION : " F "

#### TEMPERATURE D'EXERCICE

de -20°C à + 40°C

#### TRAVAIL : ( S1 )

Continu en toute position

#### MARQUAGE : CE

en accord avec EN 60335.1  
73/23 EEC basse tension  
89/392/EEC directive machines  
EMC 89/336/EEC  
RoHS 95/2002/CE

#### MOTOR :

2 polige Spaltpolmotoren

#### VENTILATORGEHAUSE :

Harzthermoplaststoff;  
Gehäuse aus sendzimiervverzinktem  
Stahlblech

#### RADIALLÜFTERRÄD :

Aluminium

#### NETZANSCHLUß :

Flachstecker 6,3 x 0,8 mm

#### SPANNUNG :

230V - 50/60Hz.  
auf Anfrage  
115V- 50/60Hz.

#### SCHUTZART: IP40

#### ISOLATIONSKLASSE: " F "

#### TEMPERATUR BEREICH :

- 20°C bis + 40°C

#### BETRIEBSART : (S1)

Fortdauernd in den allen Lagen

#### ZULASSUNGEN : CE

Abkommen mit EN 60335.1  
73/23 EEC  
89/392/EEC  
EMC 89/336/EEC  
RoHS 95/2002/CE



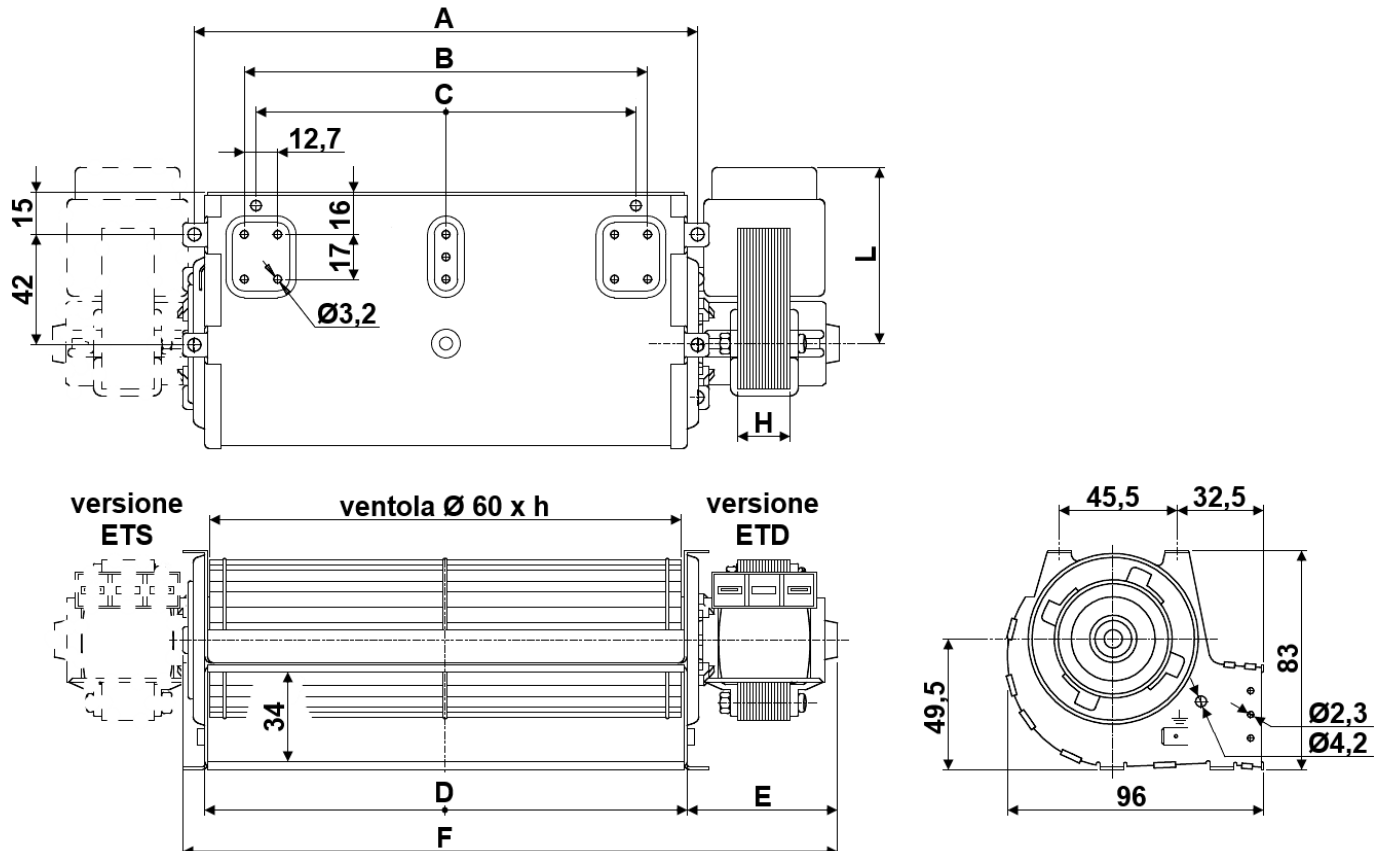
# Ventilatori tangenziali semplici


Cross-flow blowers  
single inlet

Ventilateurs tangentiels  
simple turbine

Einfach  
Querstromgebläse

## Serie ETD - ETS



Serie ETD / ETS ... : 230V - 50/60Hz - marcati  cl. B, in accordo a EN.60335.1

CODE	Electric data			Dimensions							Impeller ø x h	Airflow max, m <sup>3</sup> /h	Pressure max, Pa
	A.	W <sub>in.</sub>	RPM	A	B	C	D	E	F	H			
ETD(S)60120F15	0,18	22	1650	133	94	85	124	61	185	15	60 x 120	75	45
* ETD(S)60120F20	0,19	24	2250	133	94	85	124	66	190	20	60 x 120	85	50
ETD(S)60180F20	0,20	25	1650	193	154	145	184	66	250	20	60 x 180	140	58
* ETD(S)60180F30	0,29	41	2100	193	154	145	184	76	260	30	60 x 180	175	68
ETD(S)60240F30	0,30	42	1850	253	214	205	244	76	320	30	60 x 240	185	63
* ETD(S)60240F40	0,33	43	2200	253	214	205	244	86	330	40	60 x 240	235	70
ETD(S)60300F30	0,34	44	1500	313	274	265	304	76	380	30	60 x 300	220	60
* ETD(S)60300F40	0,34	45	1650	313	274	265	304	86	390	40	60 x 300	240	65
ETD(S)60420F40	0,35	46	1130	433	394	385	424	86	510	40	60 x 420	280	60

\* disponibili a magazzino salvo venduto

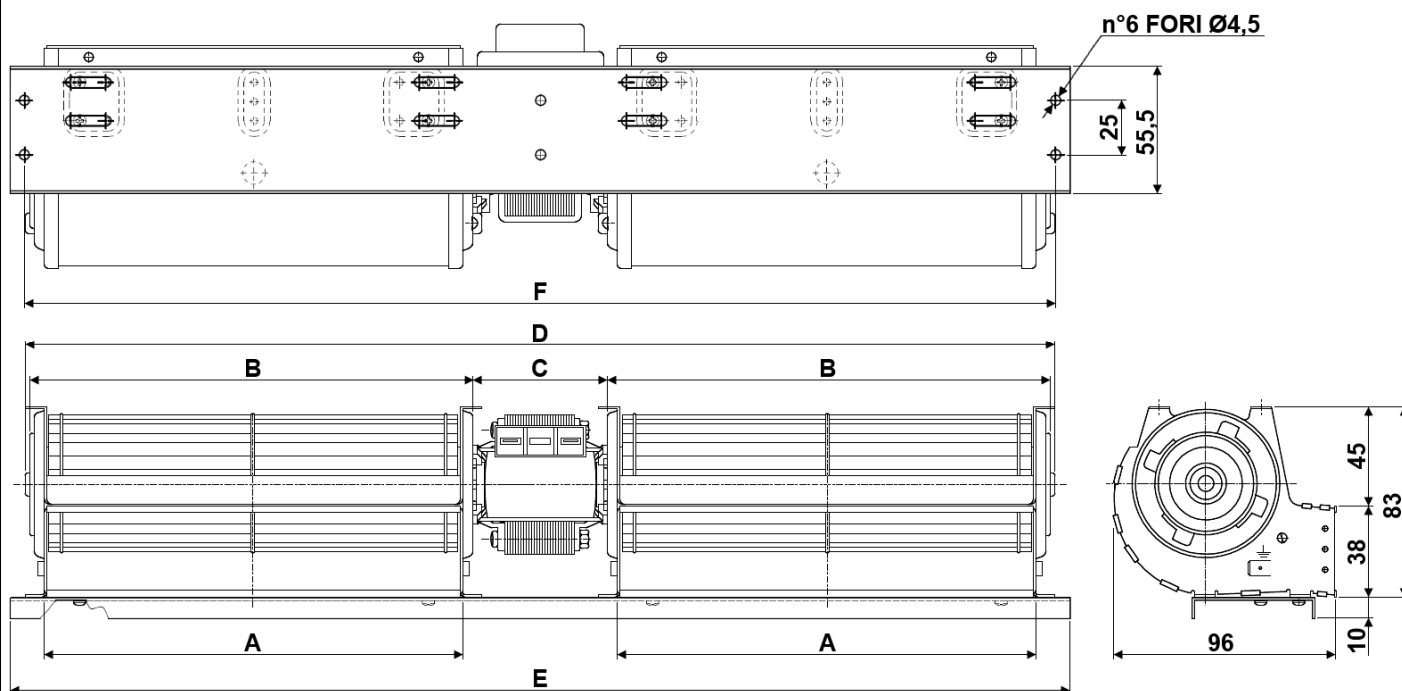
# Ventilatori tangenziali doppi

Cross-flow blowers  
double inlet

Ventilateurs tangentiels  
double turbine

Doppel  
Querstromgebläse

Serie ETC



Serie ETC ... : 230V - 50/60Hz - marcati  cl. B, in accordo a EN.60335.1

CODE	Electric data			Dimensions						Impeller ø x h	Airflow max, m <sup>3</sup> /h	Pressure max, Pa
	A.	W <sub>in</sub>	RPM	A	B	C	D	E	F			
ETC60120F20	0,19	26	1400	124	133	50	324	347	337	60 x 120	140	45
* ETC60120F30	0,32	42	2300	124	133	60	334	347	337	60 x 120	260	55
ETC60180F30	0,33	43	1340	184	193	60	454	468	455	60 x 180	255	58
* ETC60180F40	0,34	44	1560	184	193	70	464			60 x 180	295	58
ETC60240F30	0,33	43	1160	244	253	60	574	585	575	60 x 240	300	55
* ETC60240F40	0,35	45	1240	244	253	70	584			60 x 240	320	60
ETC60300F30	0,33	43	1050	304	313	60	694	705	696	60 x 300	415	58
* ETC60300F40	0,35	45	1030	304	313	70	704	715	706	60 x 300	410	60

\* disponibili a magazzino salvo venduto

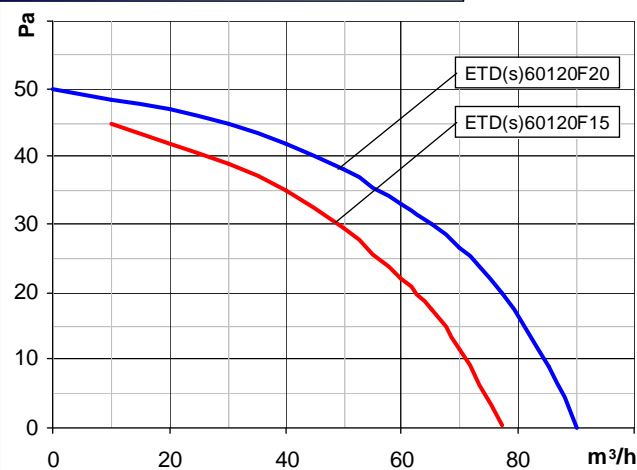
# Curve di portata

Performance curves

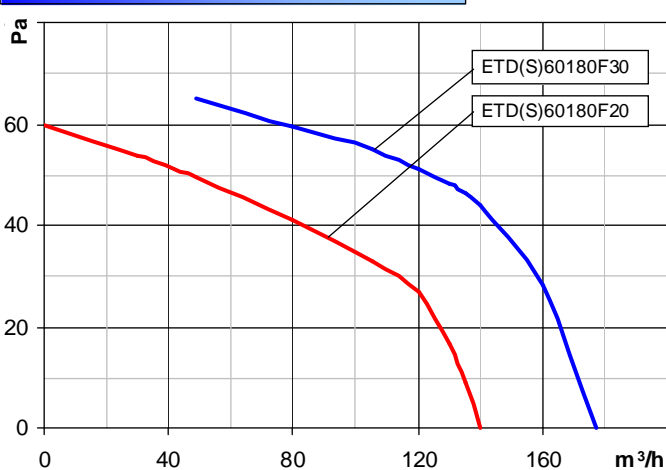
Courbes de débit

Luftleistungskennlinien

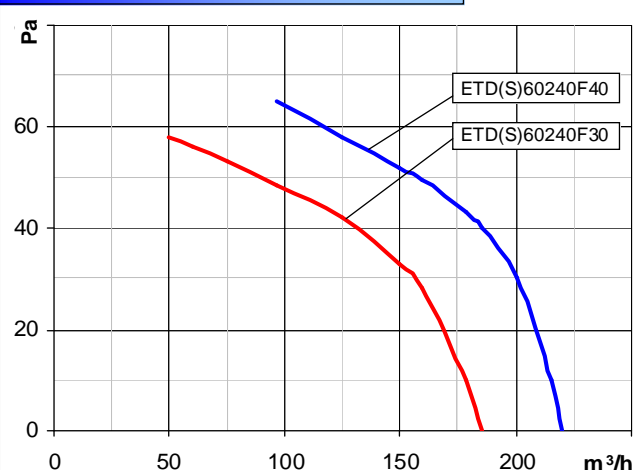
ETD.60120.15 - 60120.20, 50Hz



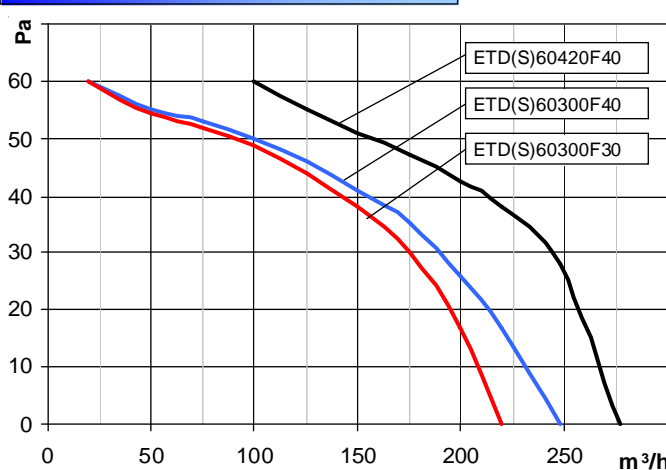
ETD.60180.20 - 60180.30, 50Hz



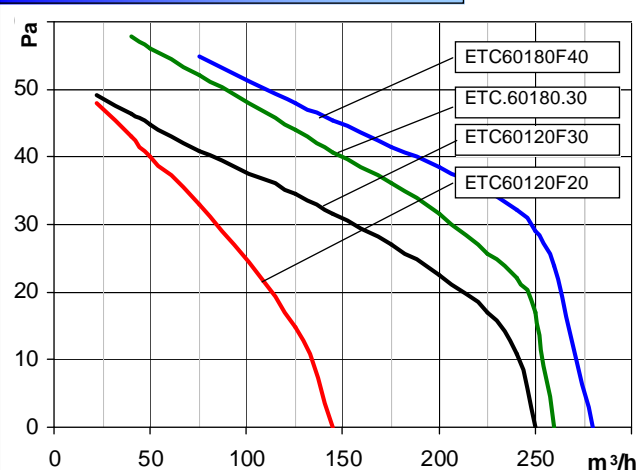
ETD.60240.30 - 60240.40, 50Hz



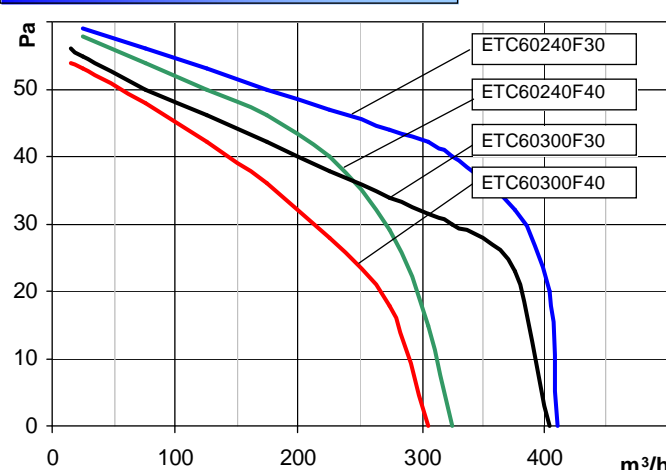
ETD.60300.30 - 60420.40, 50Hz



ETC.60120.20 - 60180.40, 50Hz



ETC.60240.30 - 60300.30, 50Hz



Tutti i dati di questo catalogo sono indicativi e possono essere variati senza preavviso. All data are indicative and may change without notice.

